

Pressemitteilung

Cluster Medizin.NRW

Dr. Patrick Guidato

24.08.2020

<http://idw-online.de/de/news752927>

Forschungs- / Wissenstransfer, Kooperationen
Biologie, Medizin
überregional



Medizin.NRW cluster launches network platform in cardiovascular research - CVD.NRW starts work

From August 18 to 20, the three focus groups "Personalized Test Systems", "Disease and Effect Mechanisms" and "Implants" met in virtual sessions and planned the work of the lighthouse CVD.NRW. A core intention of the participants is to initiate interdisciplinary cooperation and to promote the exchange between industry and science. The lighthouse CVD.NRW is an initiative of the cluster Medizin.NRW.

From basic research to the medical device

In the three focus groups of the CVD.NRW lighthouse, experts in cardiovascular research from NRW come together with companies, as well as developers from materials research or state-of-the-art sensor and measurement technology. Together they will discuss the future of cardiovascular research in NRW, exchange ideas and start joint projects. The research areas range from basic research to the development and approval of medical products, such as implants of the cardiovascular system. "NRW is a world-class location for cardiovascular research. With the CVD.NRW lighthouse, we are continuing to develop the lighthouse project 'A Heart for NRW' and offer a central and transdisciplinary network platform for cardiovascular research in NRW," explains Dr. Patrick Guidato, cluster manager of Medizin.NRW. "With the lighthouse we want to bring together players from cardiovascular research, stem cell research, medical technology, sensor technology and further fields in order to promote innovative approaches and products from and in NRW".

Deciphering disease mechanisms as the basis for new diagnostics and therapies

"Deciphering disease mechanisms is an important step in order to subsequently identify new therapies", reports Prof. Dr. Wolfgang Linke, from the Westfälische Wilhelms-Universität Münster, from the focus group "Disease and Effect Mechanisms". Professor Linke's research in Münster includes the basics of diastolic heart failure. "I support the initiative of the Medizin.NRW cluster, which promotes excellent cardiovascular research in NRW through the focus groups and the lighthouse to make Germany and Europe even more visible in the future," said Linke explaining his involvement in the focus group.

Development of personalized test systems for individual diagnostics and new forms of therapy

"What we have been doing for a long time in cancer research needs still to be done in cardiovascular research: treating patients according to their individual clinical needs," says Prof. Dr. Dr. h.c. Jürgen Hescheler, Managing Director of the Center for Physiology and Pathophysiology at the University Hospital Cologne, for the focus group Personalized Test Systems. Professor Hescheler, who has many years of experience and international expertise in the field of embryonic stem cell research, intends to use this experience specifically for cardiovascular research in NRW. "The networking of stem cell researchers and cardiovascular researchers is important in order to advance personalised medicine adapted to the individual patient".

Innovative implants for targeted therapies with few side effects

"Vascular implants are more than simple wire frames. Ever smaller high-tech materials and new layers on the nanoscale, which make implants more compatible with the body, or state-of-the-art sensor technology that sends information directly from the inside of the body to the outside - that is the future of medical technology in cardiovascular research in NRW," says Dr. Hermann Monstadt, summarizing the goals of the focus group "Implants". Monstadt is managing director of Phenox GmbH from Bochum. Founded in Bochum in 2005, the company now develops and sells state-of-the-art implants for the treatment of neurovascular diseases worldwide. "For companies with a strong focus on R&D, the exchange with science is extremely important in order to develop new technologies and products. The lighthouse CVD.NRW offers an ideal platform for this. "

wissenschaftliche Ansprechpartner:

Contact person

Dr. Patrick Guidato - Cluster Manager

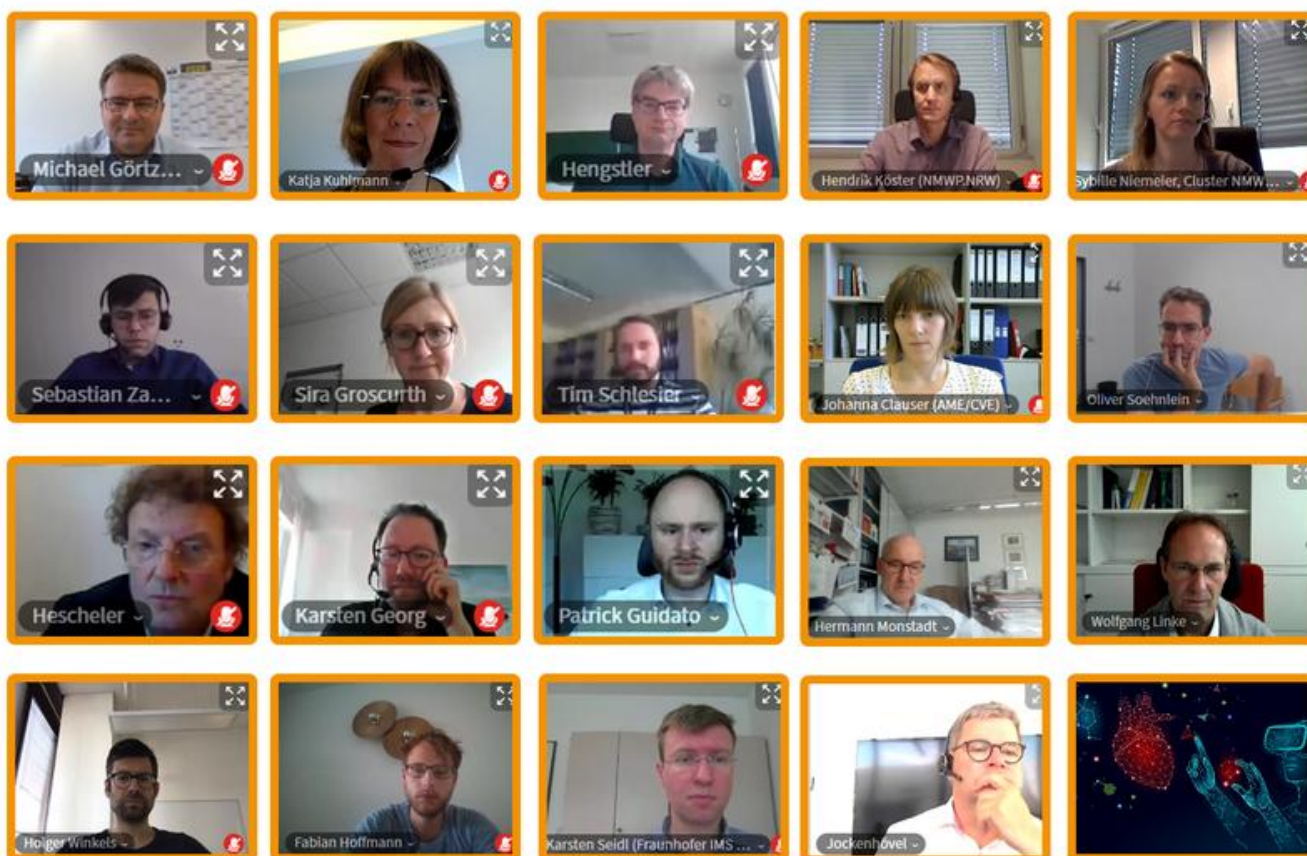
Phone: +49 228 3821-1768

Mobile: +49 173 8530052

e-mail: patrick.guidato@dlr.de

URL zur Pressemitteilung: <http://www.medizin.nrw> Homepage of the Cluster Medicine.NRW

URL zur Pressemitteilung: <https://www.medizin.nrw/CVD-NRW-1891.htm> The lighthouse CVD.NRW



Participants of the CVD.NRW week in the virtual conference room of Medizin.NRW.

Medizin.NRW

Medizin.NRW

D