

SPONSORED BY

INFORMATION

REGISTRATION



Joint Symposium of the Collaborative Research Center (SFB) 688, the Comprehensive Heart Failure Center Würzburg and the Rudolf Virchow Center

SFB 688 Mechanismen und Bildung von Zell-Zell-Wechselwirkungen im kardiovaskulären System



Organizers: Georg Ertl, Stefan Frantz, Christoph Kleinschnitz, Bernhard Nieswandt

Organized in cooperation by the Deutsche Akademie der Naturforscher Leopoldina, Halle (Saale), Collaborative Research Center 688, IZKF (Interdisziplinäres Zentrum für Klinische Forschung Würzburg), Comprehensive Heart Failure Center.

Venue: Rudolf Virchow Center, DFG-Research Center for Experimental Biomedicine, Josef-Schneider-Str. 2 Building D15 D-97080 Würzburg

Date: June 21/22, 2012

Deutsches Zentrum für Herzinsuffizienz Würzburg/
Comprehensive Heart Failure Center
Straubmühlweg 2a, Building A9, D-97078 Würzburg
Tel: +49 (0) 931 / 201-46333
E-Mail: dzhi@klinik.uni-wuerzburg.de
www.dzhi.de



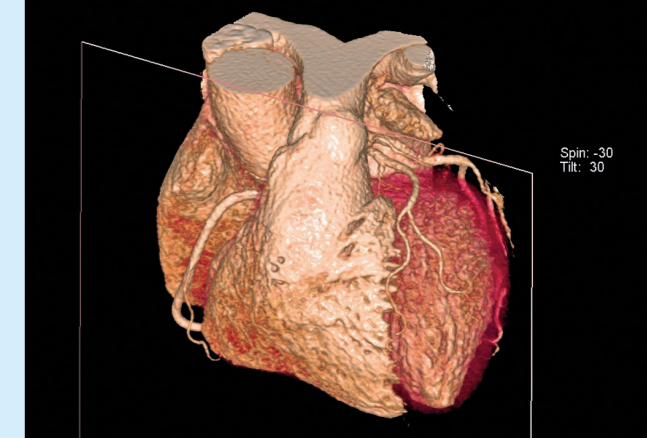
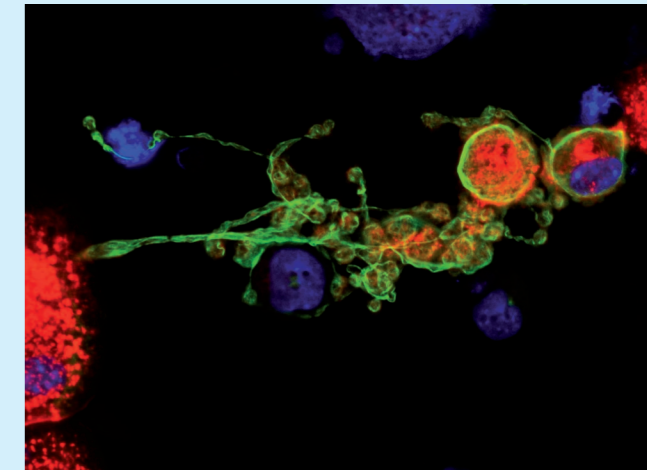
Joint Symposium of the Collaborative Research Center (SFB) 688, the Comprehensive Heart Failure Center Würzburg and the Rudolf Virchow Center

VI. Cardiovascular Healing Symposium

„Cell-cell interaction in cardiovascular damage and healing“

June 21/22, 2012

unter Schirmherrschaft der Deutschen Gesellschaft für Kardiologie



Die Veranstaltung ist bei der Deutschen Gesellschaft für Kardiologie und der Bayerischen Ärztekammer zur Zertifizierung eingereicht.

PROGRAM

Thursday, June 21

14.00–14.30 Welcome addresses

Jörg Hacker, President, Leopoldina, Halle

Isabell Hahn, DLR, Bonn

*Matthias Endres,
Charité Berlin, President DSG*

*Alfred Forchel,
President, University of Würzburg*

*Thomas Hünig,
Vice Dean, Medical Faculty, Würzburg*

*Georg Ertl, Speaker, CHFC Würzburg,
President German Cardiac Society*

*Bernhard Nieswandt,
Speaker, Collaborative Research Center
(SFB) 688, Würzburg*

14.30–16.00 Session I: Thrombosis – part I

Chairs: Antje Gohla (Würzburg);
Johann Heemskerk (Maastricht)

Stephen P. Watson (Birmingham, UK):

ITAM signaling in platelets and its
role in thrombosis and development

Bernhard Nieswandt (Würzburg):

Arterial thrombosis:
Novel mechanisms and targets

Karl-Heinz Peter (Melbourne, AUS):
Activation-specific single-chain antibodies
as platelet inhibitors and targeting tools

16.00–16.30 Coffee break

16.30–18.00 Session I: Thrombosis – part II

Chairs: Jürgen Schrader (Düsseldorf);
Simon de Meyer (Leuven, BE)

Wolfgang Bergmeier (Chapel Hill, USA):

Key regulators of Ca²⁺ signaling
in platelets

Thomas Renné (Stockholm, SE):

Activation of the contact system in
thrombosis and inflammation

Guido Stoll (Würzburg):

Thrombo-inflammation in acute stroke

18.00–18.45 Key note lecture

Chairs: Joachim Thiery (Leipzig);
Guido Stoll (Würzburg)

Barry Coller (New York, USA):

GP1Ib/IIIa antagonists: Historical
perspective and future direction

18.45–21.00 Get together and poster session

Friday, June 22

08.00–09.30 Session II: Injury mechanisms in cardiovascular diseases – part I:

Chairs: Ursula Ravens (Dresden);
Georg Ertl (Würzburg)

Thomas Thum (Hannover):

miRNA and cardiac remodeling after MI

Katrin Schäfer (Göttingen):

Effects and mechanisms of the adipokine
leptin during vascular remodelling

Michaela Kuhn (Würzburg):

Natriuretic peptides and cardiac remodeling

09.30–10.00 Coffee break

10.00–12.00 Session II: Injury mechanisms in cardiovascular diseases – part II:

Chairs: Johann Bauersachs (Hannover);
Peter Jakob (Würzburg)

Wolfgang Bauer (Würzburg):

Functional cardiovascular MR-Imaging
in the mouse

Ruth Strasser (Dresden):

Heart failure: novel mechanisms

Leon De Windt (Maastricht, NL):

miRNA in cardiac hypertrophy

Martin Lohse (Würzburg):

Signaling pathways in cardiac hypertrophy

12.00–13.00 Lunch and poster session

13.00–14.30 Session III: Interactions between the cardiovascular and the immune system – part I

Chairs: Malte Kelm (Düsseldorf);
Ruth Strasser (Dresden)

Steffen Massberg (Munich):

Crosstalk of immune cells and platelets

Stefan Frantz (Würzburg):

Cardiac remodeling and the immune
system

Douglas Mann (St. Louis, USA):

Cytoprotective effects of innate immunity

14.30–15.00 Coffee break

15.00–16.30 Session III: Interactions between the cardiovascular and the immune system – part II

Chairs: Heinz Wiendl (Münster);
Alma Zernecke (Würzburg/Munich)

Anna Planas (Barcelona, ES):

Danger signals and innate immunity
in ischemic stroke

Costantino Iadecola (New York, USA):

Neurovascular-immune interactions
in models of Alzheimer's disease

Christoph Kleinschnitz (Würzburg):

Regulatory T cells in ischemic stroke

16.30–17.00 Coffee break

17.00–18.30 Session IV: Clinical Translation: Hopes, Failures, and Success

Chairs: Helmuth Steinmetz (Frankfurt);
Ulrich Walter (Mainz)

Gerhard Dickneite

(CSL Behring GmbH, Marburg):

FXIIa: a clinical target?

Ulrich Dirnagl (Berlin):

Immunodepression in stroke: From
preclinical concepts to clinical trials

Roland Veltkamp (Heidelberg):

Novel anticoagulants – a Neurologist's
perspective

18.30 Final remarks

Georg Ertl,

Bernhard Nieswandt

REGISTRATION



I will attend the „Joint Symposium of the Collaborative Research Center (SFB) 688 and the Comprehensive Heart Failure Center Würzburg“ June 21 and 22 2012 in Würzburg.

Fax: +49 (0)931 / 201-646333

Title

Name

Surname

Street

Zip code, City

Phone, Fax

e-mail

If you need any further information, please do not hesitate to contact
Deutsches Zentrum für Herzinsuffizienz Würzburg/
Comprehensive Heart Failure Center
Straubmühlweg 2a, Building A9, D-97078 Würzburg
Tel: +49 (0) 931 / 201-46333
E-Mail: dzhi@klinik.uni-wuerzburg.de
www.dzhi.de

Deadline: May 21 2012

