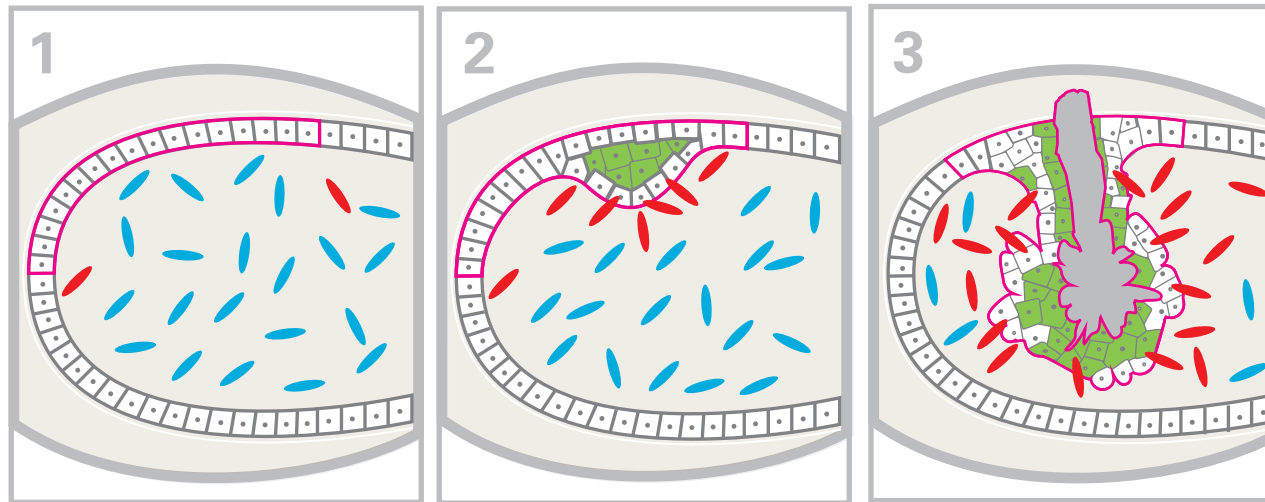


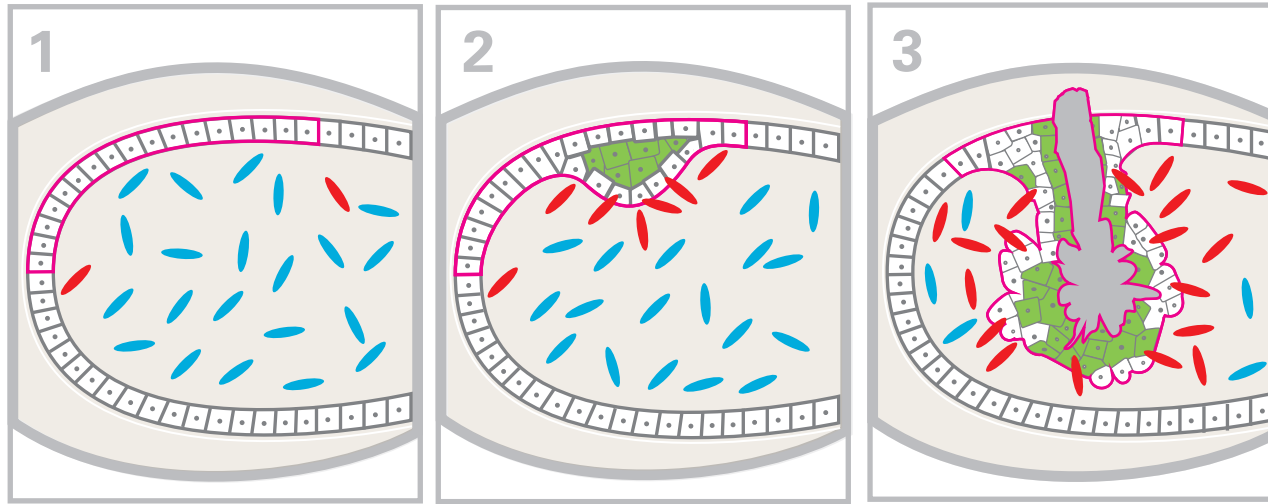
Entwicklung des Darmkrebses



■ = Normale Mikrobiota ■ = Tumor-assoziierte Mikrobiota ■ = Tumorstammzelle

- 1 Gesunde Darmschleimhaut
- 2 Beginn Polypenbildung
- 3 Darmkrebs in später Form

Development of colon cancer



 = normal microbiota  = tumor-associated microbiota  = tumor stem cell

- 1 Healthy intestinal mucosa
- 2 Formation of polyps
- 3 Late stage of cancer