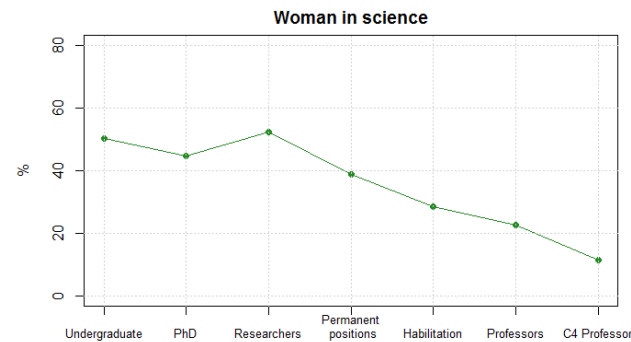
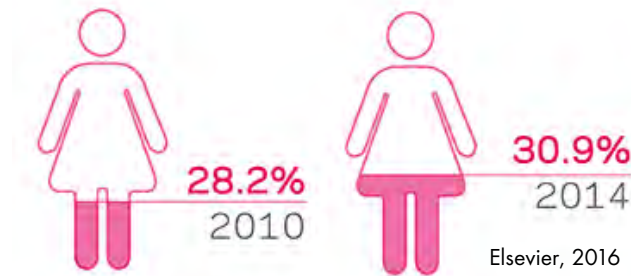


Why is this important?

The German Leaky Pipeline:



Undergraduates are roughly 50/50 in terms of gender ratio, but something happens along the way and women leave science.



In Germany, the number of female researches is growing but it is still well below 50%. Research shows how mix-gender groups produce higher quality work than mono-gender groups.

Equality is a human right! So come and support your local scientists. And help us challenge the perceptions of who a scientist is.

Where to find us:



Find us near the Herrfurthstraße / Schillerkiez entrance in Tempelhofer Feld.

Easy access by foot, bike and public transport with U8 Boddinstraße (the closest U-Bahn) and plenty of bus routes.

The weather won't stop us...



If it's raining...



bring an umbrella!



If it's sunny...



bring suncream and a hat!

Want to find out more?

If you'd like to know more about our amazing speakers, or about the other soapbox science events happening around the world, or want to be involved next year, have a look at **our website**: soapboxscience.org

Or **email us** at: soapboxscience.berlin@gmail.com

Twitter: #SoapboxScienceBerlin

Facebook: facebook.com/soapboxscienceberlin

Map: google.com

Graphic assets designed by: Freepik, rosapuchalt (Freepik), Titusurya (Freepik), Photoroyalty (Freepik), lbrandify (Freepik)

Thanks!

12 researchers...
talking about
science...
on a soapbox

On **Sunday 4th June 2017** Berlin will host its very first soapbox science event:

12 female scientists will step on their soapboxes and tell you about the fascinating work they do.

So come join us and add a little extra excitement to your Sunday stroll!



soapbox
science



04/07/17 - 14:00 - 17:00

Open to everyone

Come along if you are 5 or 95!

Languages: English, German (limited)



What is Soapbox Science?

Soapbox Science was founded in 2011 in the UK by Nathalie Petorelli and Seirian Sumner, two biologists now based in London.

Soapbox Science is a novel public outreach platform for promoting women scientists and the science they do. Our events transform public areas into an arena for public learning and scientific debate.

The format comes from Speaker's corner in Hyde Park, London. This corner grew out of struggle for civil liberties in Victorian times, and the establishment of this corner turned out to be a significantly milestone in the development of democratic institutions.



People would elevate themselves by standing on a soapbox and give an impromptu speech, normally of a political nature. In 1872 parliament granted the park authorities the right to allow these public meetings. For more than a century, this corner has been a hotspot for protest and debate and the symbol of a free society and a mature democracy.

Soapbox Science not only mimics the physical format by having a soapbox, but also echoes the need in our society for gender equality, with a stronger focus on the science profession.

What will you hear?

Selected from a competitive pool of researchers from Berlin and around, our 12 speakers will be sharing their work in technology, science, medicine and engineering.

Ms Maud Bernard-Verdier, Freie Universität Berlin "Aliens in the urban jungle: who are the plants we live with in Berlin and where do they come from?"

Dr Lysanne Snijders, IGB-Berlin/Wageningen University & Research "Do animals have social lives, and does it matter?"

Ms Constance Holman, Charité Universitätsmedizin Berlin "Our mental map: How we use the brain to navigate"

Ms Mariana Cerdeira, Charité Universitätsmedizin Berlin "Treating brain diseases from the inside out"

Dr Kate Laskowski, Leibniz-Institute of Freshwater Ecology & Inland Fisheries "Animal personalities: to boldly go where no fish has gone before"

Dr Tanja Gabriele Baudson, TU Dortmund University "What do you think you know about the gifted?"

Ms Maria Piquer-Rodriguez, Humboldt Universität zu Berlin "Deforestation in South America: Choice for dinner?"

Ms Clara Romero, Leibniz-Institute of Freshwater Ecology and Inland Fisheries "Urban waters matter"

Ms Alicia Correa, Justus Liebig University "Water in mountain streams, where does it come from?"

Dr Wing Ying Chow, Leibniz Institute for Molecular Pharmacology "Collagen holds your cells together – but what else does it do?"

Ms Sophie Dithmer, Leibniz Institute of Molecular Pharmacology "The brain: also a brave warrior needs a helping hand"

Dr Lysann Zander, Freie Universität Berlin "Extend Yourself: The Power of Social Networks in School and University Settings"

Who brought soapbox science to Berlin?



Carolina Doran



Cecilia Kruszynski



Ana Faustino



Robert Morgenstern



Jenny Fabian

Our local organizers in Berlin are a team of scientists from different nationalities living and working in the city where they study a range of topics within the life sciences. They have decided to organize this event to fulfil the goal they share with the Soapbox Science initiative: make science available to people of all backgrounds and ages, and empower future female scientists.

Who supported us?

It wouldn't have been possible to run this event without the generous logistical and financial support of our sponsors:



Leibniz-Institut für Zoo- und Wildtierforschung
IM FORSCHUNGSVERBUND BERLIN E.V.



Einstein Center
for Neurosciences Berlin

